



*Invacare*® | **Matrix® Flo-tech™ Solution**

Slimline cushion with unique dual fluid sac system

**matrix**<sup>®</sup>  
SEATING SERIES

Trusted Solutions,  
Passionate People



The *Invacare Matrix Flo-tech Solution* cushion uses a combination of a slim, shaped foam cushion base and a dual layer of fluid sacs over the ischial and sacral area. The dual fluid sacs and the unique moulded foam shape of the solution increase the support surface area. This delivers a superior level of protection for patients identified as being at Very High Risk of developing pressure ulcers, or for those with already established tissue damage.

## Features and Options



### Ingress Resistant Cover

Cover is two-way stretch, water-resistant and vapour-permeable. Cover features an anti-slip base with carry handle for easy transportation.

### Available in 44 sizes

The *Invacare Matrix Flo-tech Solution* is available in a range of 44 sizes, from 38 x 41 to 51 x 46 cm (380 x 410 to 510 x 460 mm). (See prescription chart for details).

### Invacare Matrix Flo-tech Deep Solution option

Option of a 10 cm (100 mm) "Deep" foam base is also available in 12 sizes. (See prescription chart for details).

### Ultra-fresh™ added to all cushions for antimicrobial and odour protection

Antimicrobial treatment has been added to all *Flo-tech* foam to help make it resistant to the growth of odour causing bacteria. Helps provide longer lasting freshness.

### Slimline contoured foam base with large dual fluid sac covering the entire top surface of the cushion







The contact area between the individual and the foam cushion is protected, as the fluid displaces to redistribute pressure away from bony prominences. The additional layer of fluid is incorporated under the ischial and sacral area to further enhance the pressure reducing qualities of this cushion, making this cushion suitable for those at very high risk.

### Slimline contoured cushion

Some individuals prefer a slimline cushion, finding it more convenient with their daily living activities. The low profile is particularly beneficial for the facilitation of side transfers.

## Technical data

For more comprehensive pre-sales information about this product, including the product's user manual, please see the [Invacare website](#).

	Various sizes	Height	Total product weight	Max. user weight <sup>1</sup>	Max. cleaning temperature	Warranty
						Manufactured to European Standards: BS EN 1021-1 Cig, BS EN 1021-2 Match and BS 7176 (Crib 5)
<b>Matrix Flo-tech Solution</b>	A range of 44 sizes	78 mm	3.08 kg	140 kg	80°	3 years

**Disclaimer**  
1. Guide maximum user weight limits are set assuming that the cushion selected is of appropriate width and depth for the intended user/s.

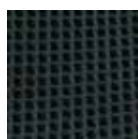
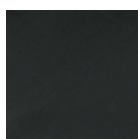
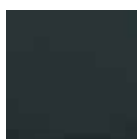
## Colours

Black Smooth

Black wipedown

Black spacer fabric

Baltic Blue



Tel: +44 1 656 776 222  
Fax: +44 1656 776 220  
E-mail: [uk@invacare.com](mailto:uk@invacare.com)  
Sales Order E-mail:  
[ordersuk@invacare.com](mailto:ordersuk@invacare.com)  
[www.invacare.co.uk](http://www.invacare.co.uk)

Invacare Limited  
Pencoed Technology Park  
Pencoed - Bridgend CF35  
5AQ - United Kingdom

Tel. +353 1 8107084  
Fax +353 1 8107085  
Email: [ireland@invacare.com](mailto:ireland@invacare.com)  
[www.invacare.ie](http://www.invacare.ie)

Invacare Ireland Ltd  
Unit 5 - Seatown  
Business Campus  
Seatown Road  
SWORDS - County  
Dublin - Ireland



**Yes, you can.®**

