

Invacare® | *Special Controls*

NEW



Breaking through the barriers

Make phone calls, surf the net, text and join the online world with the iPortal Accessibility Application. The iPortal Accessibility enables joystick control of iPhone, iPod Touch and iPad devices. It works with other Invacare special controls such as switch or head control.



Yes, you can.®

iPortal™



iPortal

The **iPortal** integrates an iPhone or iPod Touch to allow full access to the device or to display wheelchair information in a great looking and easily visible way. It can be easily added to any new or existing **Invacare ACS** wheelchair control system without reprogramming the wheelchair.

iPortal Dashboard application

The **iPortal** Dashboard application displays wheelchair information in real time using Bluetooth® technology to connect with the wheelchair system. It displays speed and has a speed range indicator and in conjunction with the iPhone 3GS it features a compass heading. Also it has a seat adjustment indicator and a large battery gauge.

A ground breaking functionality that makes a difference - Accessibility

Accessibility is a pioneering solution that gives wheelchair people the ability to control an iPhone, iPod Touch or iPad via their wheelchair joystick or special input device. Assistive speech Apps can be easily used along with your Apple device without even touching it. Ideal for those with impaired hand control who are unable to use an Apple device or a mobile phone.

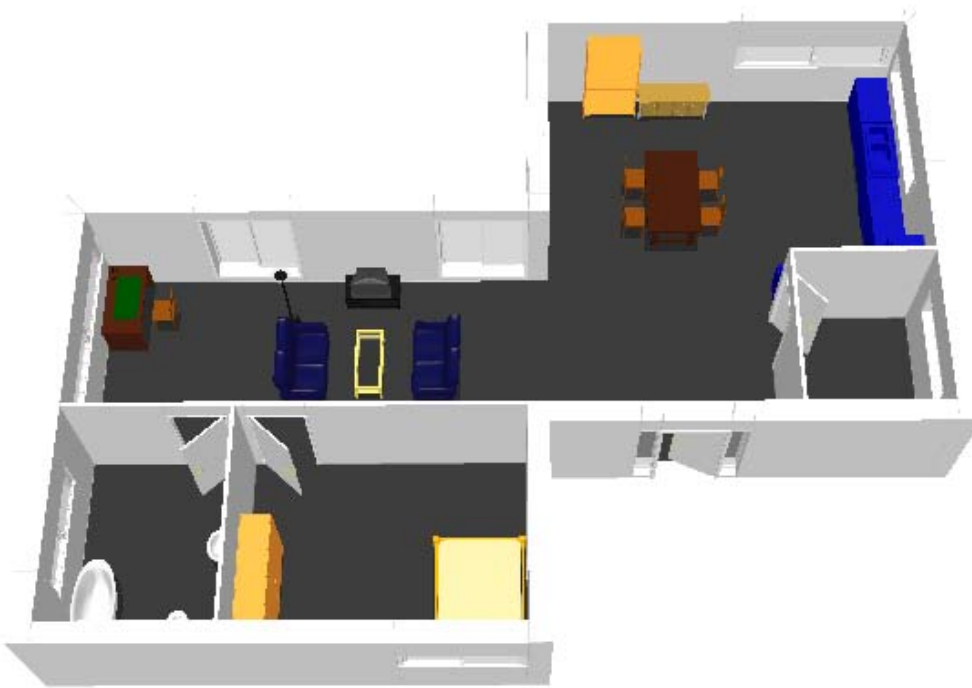
Features



Freedom to push the limits

Browsing an Apple device, surfing the net, making calls, playing music and staying in contact with friends, even wheelchair information is displayed in real time. It operates on iPhone 3GS and later versions, iPod Touch 4 and later versions and iPad. Connect via a WiFi connection and control lights, power, windows, doors, curtains, air conditioning as well as the ability to control home appliances (TVs, stereos, DVDs etc.) via infrared.

Features



Applications for home automation

Due to limited mobility wheelchair people can often benefit from being able to access the world around them from a sitting position. However it's not easy to independently open a door, close curtains, find a remote control or operate a PC from a wheelchair. An iDevice can assist to control domestic environmental controls via a large number of 3rd party applications. These can be downloaded via iTunes, in many cases for free or for a modest charge just search on iTunes "home automation".



iPortal Bluetooth® module and mounting hardware

A USB charger cable ensures the iDevice stays fully charged throughout the day. Discreet iPhone and iPod Touch cradle with adjustable tilt angle mounts the iDevice to the wheelchair in a convenient position. The iDevice can be easily removed when required and the gooseneck bracketry is available in two lengths.



Seating

When in seating mode, dashboard displays the battery state and the active part of the seat is highlighted. While the seat moves, the graphic flashes.



Drive

The dashboard will follow when you turn your wheelchair to drive mode. The dashboard displays battery state, drive profile, speed pot setting, the speed and compass heading (iPhone 3GS only).

DSL Head Control



DSL-105 Head Control Series

The DSL-105 series are non-proportional, proximity head controls. They provide dependable control particularly for people with low muscle tone. Sensors easily disconnect to allow for first time mobility people to experience the control one function at a time, or for sensors to be allocated to different control directions.

Non-contact

The non-contact sensors provide very natural control "where you look is where you go". It acts like a joystick with capacitive sensors. It senses conductive objects and translates them into control commands.

Modular and flexible

Side sensor pads are mounted on adjustable swing-away brackets that can be adjusted to match the individual's exact head activation points in space. This allows the pads to be set up to avoid eyeglasses, avoid sensitive reflex points, or to give larger activation movements for people with cerebral palsy. Side sensor pads swing away for easy transfers. Hardware can be mounted and is adjustable in multiple directions to allow the head control to be positioned accurately for people with kyphosis or scoliosis.

Invacare Limited
Pencoed Technology Park - Pencoed -
Bridgend CF35 5AQ - United Kingdom
Tel: +44 1 656 776 222
Fax: +44 1656 776 220
E-mail: uk@invacare.com
Sales Order E-mail:
ordersuk@invacare.com
www.invacare.co.uk

Invacare Ireland Ltd
Unit 5 - Seatown Business Campus
Seatown Road - SWORDS - County
Dublin - Ireland
Tel. +353 1 8107084
Fax +353 1 8107085
Email: Ireland@invacare.com
www.invacare.ie

© 2011 Invacare International Sàrl
All rights reserved.

All information quoted is believed to be correct at time of print.

Invacare reserves the right to alter product specifications without prior consultation.

iPhone and iPod Touch are trademarks of Apple Inc., registered in the U.S. and other countries. The Bluetooth® word mark and logos are registered trademarks owned by Bluetooth® SIG, Inc. and any use of such marks by Apple is under license. Apple is not a participant in or sponsor of this promotion. "Made for iPod," and "Made for iPhone," mean that an electronic accessory has been designed to connect specifically to iPod or iPhone, respectively, and has been certified by the developer to meet Apple performance standards. Apple is not responsible for the operation of this device or its compliance with safety and regulatory standards. Please note that the use of this accessory with iPod or iPhone may affect wireless performance.

Special Controls - EU - 11/2011 - 1552324

Features and Options



DSL-105M Mini Head Control

The sensors are adjustable from a small 197mm position to a 281mm position.



DSL-105 with pad

This module has a width of 172mm. It is available as the STA Stealth Ultra Adult with a 141.5mm pad or DSL-105STP Stealth Ultra Paediatric with a 122mm pad.



G91 master remote

The G91 has display functions, mode switches and bus and jack sockets. There is no joystick built in and it matches the proximity head control. The combination is approved for use with the ACC4B interface.



Yes, you can.®